

Pedal Peoria History Ride. (parts 1 and 2)

These rides will pass by the following Historic Sites in Peoria:

Peoria Riverfront - The riverfront was once the center for numerous river-based industries, including fishing, musseling (for button making), ice-cutting (in winter), and transportation. To learn more about the history of the river in Peoria, visit The Riverfront Visitors Center, which is housed in the former Powell Press Building, ca. 1852.

Springdale Cemetery - The cemetery is one of the most beautiful in the midwest. "It is a repository of much of the rich and varied history of Peoria," including gravesites of:

Lydia Moss Bradley - Founder of Bradley University. Interred in 1908. "Here is gathered a family whose members were together for such a tragically short time in life, but are even more united than ever in death. For the children of Tobias and Lydia Moss Bradley lived but briefly. The oldest was Laura, and the rest - William, Mary, Clarissa, Rebecca and Tobias Moss - all died in infancy. Had they lived, it is unlikely that Lydia ever would have founded what has become Bradley University or given the land that is now Bradley Park."

Captain Henry Detweiller - "He was a beloved steamboat captain whose tombstone bears an anchor. It is surrounded by the graves of his children, and it almost seems as if they have gathered around their father to hear some of his stories about life on the river, his adventures in the Civil War, or his days in the business of cutting and preserving ice from the river." Jerry Klein PJS 5/30/99

Captain Zealy Moss - Father of Lydia Moss Bradley, and the only known soldier of the Revolutionary War buried in Springdale.

Octave Chanute - Pioneer in the development of manned flight. Advised the Wright Brothers about how to create enough lift and was present with them at Kitty Hawk.

John C. Flanagan - Pioneer land developer, interred in 1891. His mansion, circa 1840, is headquarters for the Peoria Historical Society.

Jean Morron - Early pioneer family, philanthropist, and educator. Her house is operated by the Peoria Historical Society.

Thomas Ford - Governor of Illinois from 1842-1846, at the beginning of the Mexican War. Interred in 1850.

Springdale Cemetery Gatehouse - Historic landmark, built in 1900, with a unique, pyramided Japanese-style roof.

Flanagan House (see Springdale gravesites above)

-----Break between part 1 & 2 -----

Randolph/Roanoke Historic District - Four of these historic homes from the late 1800's have a plaque mounted by the street describing its history. The John Wynd Residence (1889), the Ballance-Herschel House (1888), and the Sandmeyer Home (1890) are all Queen Ann Style, and the Julio Balance House (1885) is Eastlake Style.

Portions in both parts of the ride

-----Break between part 1 & 2 -----

Peoria Women's Club - In 1890, PWC incorporated under laws of the state of Illinois. Membership was at 129 members. The club decided to start meeting in the auditorium of the YWCA. Noise and distractions convinced the women they needed a building of their own. The members formed a stock company in efforts to build a clubhouse, selling shares at \$10 each and raising \$25,000. Property at the corner of Madison and Fayette was purchased from a church. The church was torn down and the clubhouse built. In May of 1893, the cornerstone was laid, and a year later, the building was dedicated.

The original building is now in the process of being restored:

<https://peoriawomensclub.com/restoration>

Original "Sears" home – Available from Sears, mail ordered as a kit, between 1908 and 1942. One of the Willard designs is at 2111 W. Kellogg in West Peoria. Across the street from it is one of the Elmwood designs (these will be on the West Peoria Ride). There is also another Elmwood at 1311 N. Bourland, this on the History 2 Ride. See the original advertisements at the end of this page.

Giant Oak Park - This oak tree may be the oldest tree in the region. It is nearly 500 years old, 50 ft high, and has a 10 ft spread. The tree has witnessed the entire recorded history of the Peoria Area, since the French first explorers first arrived in the mid 1600s.

High Street Historic District - High Street was once home to many of Peoria's elite residents who made their fortunes in the distilling industry. Because of Prohibition, the distillers strategically built their houses to overlook the city so they could see if law enforcement authorities were on their way to visit. Distilling began in Peoria about 1824 along the banks of the Illinois River. By 1879, more distilling was done in Peoria than in any other city in the country; 15 million gallons was produced yearly from 11 different distilleries. The street includes three Queen Anne style Victorian homes, a Georgian Revival mansion, and several Gothic Revival cottages. The Erastus D Hardin House at 511 High Street is one of the earliest, built in 1859. The original house consisted of a flush, two-story French Empire style facade with a central square tower. In 1904 a classic columned portico with giant pillars was added to the front.

Moss Avenue Homes

Woodward House - This home is considered one of the finer examples of Second Empire Style in downstate Illinois, and one of the oldest structures (1870) still standing on Moss Avenue.
Francis W. Little House - This Prairie Style home designed by Frank Lloyd Wright (1903) is the only Frank Lloyd Wright home in Peoria, although there is similar Prairie Style home that is not an original FLW design a short distance East on Moss.
Morrison House (see Springdale gravesites above) of the Peoria Historical Society.

Peoria Mineral Springs, Mineral Springs House. (quoted from Wikipedia) - Peoria Mineral Springs is 14,500-year-old natural spring. The springs "are a remnant of the glacial retreat of the [Ice Age](#). The springs produce over 30,000 gallons every day. It originally fed a former Peoria lake called Goose Lake, which was drained in the 1800s.

The site was a Native American campground. Artifacts can still be found around the site.

In 1843, a "cave-like [barrel-vaulted](#) brick reservoir" was constructed; the structure is concealed within the hillside and captures the flow of three separate springs. The brick reservoir was built for Peoria's first water company, Peoria Water Works."

Founder of Chicago statue Jean-Baptiste Pointe DuSable - Fur trader Jean-Baptiste Pointe DuSable became the first non-Native American resident of the area that is now known as Chicago. DuSable was of African descent and came to the region from the French colony of Saint Domingue (After winning independence from France, the Saint Domingue became known as Haiti). History books have recognized DuSable as the first settler of non-European descent in the area, having established a fur-trading outpost in 1779 when the area was a largely uninhabited swamp. The state of Illinois officially recognized DuSable as "the father" of the city of Chicago in 1968.

The Elmwood

1918 SEARS ROEBUCK HONOR BILT MODERN HOMES

By 1918, the Elmwood model was in its 8th year as a Sears home plan, having appeared first in 1911.* Published for the last time in 1921, it was reborn in 1922 as the slightly modified **Sunbeam** finally ending its run in 1926. It's a rather attractive five-room Craftsman-style bungalow with an open-air sleeping balcony, grand columns, (See C. L. Bowes 1918 *American Modern Homes* plan B-7489 which is virtually identical but for the most minimal dimensional changes.)

A CRAFTSMAN BUNGALOW



The ELMWOOD

Honor Bilt

\$1,493⁰⁰

No. 3013 Yellow Pine Finish "Already Cut" and Fitted, \$1,493.00.
No. 3014 Oak Finish, "Already Cut" and Fitted, \$1,528.00.



At the above prices we will furnish all the material to build this five-room bungalow, consisting of mill work, flooring, porch ceiling, siding, finishing lumber, sideboard, building paper, eaves trough, down spout, sash weights, hardware, mantel, painting material, lumber, lath and shingles and Best-of-all felt roofing for roof over sleeping balcony. No extras, as we guarantee enough material to build this house.

A FIVE-ROOM bungalow of the Craftsman style with open air sleeping balcony. The large living room has oak mantel, open stairs and closet under stairs. Cased opening leads to dining room. Dining room has sideboard facing the cased opening with leaded glass sash on each side. Plate rail around the entire room.



SECOND FLOOR PLAN.

First Floor For No. 3014 we furnish front door, also inside doors and moldings of clear oak in the latest Craftsman design. Clear red oak flooring for the living room and dining room. Maple flooring for kitchen and pantry.

Second Floor No. 3014 is trimmed in birch. We furnish front doors leading to the balcony and inside doors and trim of birch, Craftsman design, and clear maple flooring. Stairs on second floor are within arm's reach of either bedrooms or bathroom. Each bedroom has door leading to sleeping balcony. A linen closet in hall.

For No. 3013 we furnish our best "Quality Guaranteed" mill work, described on pages 118 and 119. Interior doors are five-cross panel, with trim and flooring to match, all yellow pine, in beautiful grain and color. Windows are made of clear California white pine, with good quality glass set in with best grade of putty. Porches have fir edge grain flooring.

Our Guarantee Protects You—Order Your House From This Book
Plans Furnished Free on Receipt of Order. If You Want Plans Before Ordering House, Price of Plans, \$2.00.

Paint for two coats outside, your choice of color. Varnish and wood filler for interior finish. Chicago Design hardware, see page 126.

Built on a concrete block foundation, excavated basement under entire building. Frame construction and sided with clear cypress bevel siding. Shingled with best grade thick cedar shingles. All framing lumber is No. 1 yellow pine.

Basement has concrete floor. Basement, 7 feet high from floor to joists. First floor 9 feet from floor to ceiling. Second floor, 8 feet 6 inches from floor to ceiling.

OPTIONS

We will furnish Sheet Plaster Finish instead of lath for \$90.00 extra.
We will furnish Fire-Clay Roofing instead of 24 wood shingles for \$4.00 less.
This house can be built on a lot 26 feet wide.

Built at Washington, D. C., Caldwell, Idaho, Bloomington, Ill., Crystal Lake, Ill., Gary, Ind., New Haven, Ind., Pratt, Kan., Harrods Creek, Ky., Rochester, Minn., Pittsford, Miss., New York, N. Y., Fargo, N. Dak., Sioux Falls, S. Dak., Madison, Wis., and other cities.

THE WILLARD ▲ ▲

▲ FIVE ROOMS AND BATH

THE Willard is a two-story English cottage type of home and is a remarkable value due to careful planning and saving created by our "Honor Bilt" System of construction. This home will make a good investment in any community, as the specifications are complete in every detail. The exterior has very attractive lines. The projection at the front, which forms the vestibule and closet, is very graceful in appearance. The exterior walls are covered with clear red cedar 24-inch shingles, a very popular wall covering for this type of home. The front door is made of clear white pine of V-shape batten design and is decorated with a set of ornamental wrought iron hinges. The lantern over the front door is of English design. Batten type shutters to match the front door design are used with the double windows in the front of the dining room on the first floor.

FLOOR PLANS

The Living Room is separated from front entrance by the vestibule which contains a good size closet for storage of outer wraps, etc. Living room is 14 feet 5 inches wide by 17 feet 5 inches deep and contains stair entrance to second floor, attractive fireplace which is planned to have a combination brick and wood mantel, and three large windows in right wall, which assure this room plenty of light.

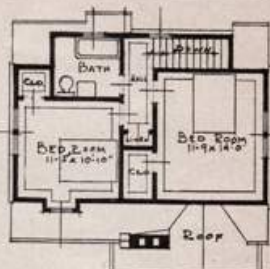
Dining Room is 12 feet 5 inches wide by 11 feet 5 inches deep and connects the living room by the use of a circle head plastered arch which matches the front entrance.

Kitchen is above the average for a home of this size and contains a convenient place for everything, with built-in ironing board and two kitchen cabinets.

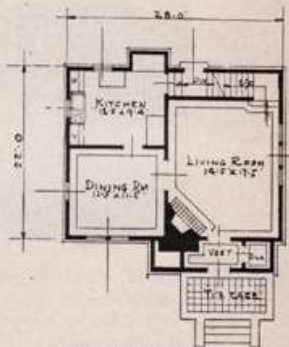
Two Bedrooms and Bath on the second floor. Two large closets and a linen closet located at the end of the hall.

See pages 12 to 15 for information on Heating, Lighting and Plumbing. Fill out information blank for complete price and details.

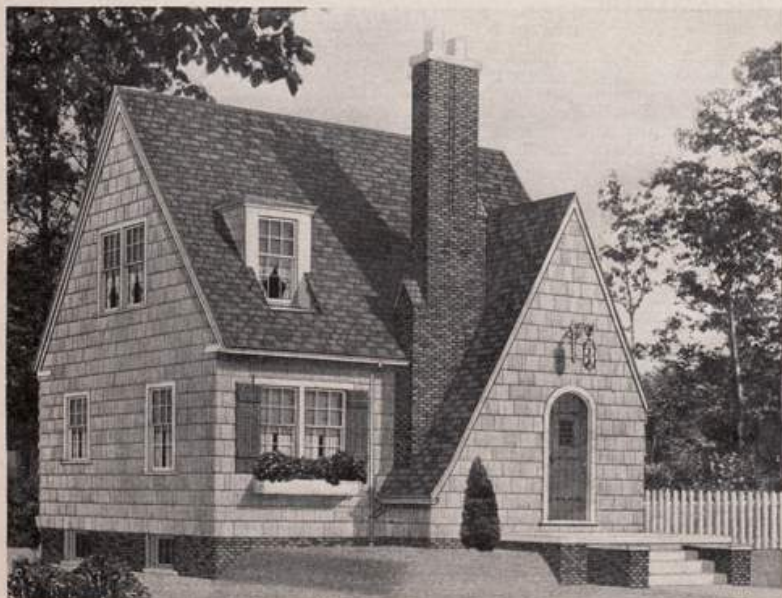
MODERN HOME
No. 3265
ALREADY CUT AND FITTED



SECOND FLOOR PLAN



FIRST FLOOR PLAN



When it is your own home,
mowing the lawn is a pleasure
instead of work.